

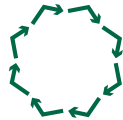
SCHOOL KIT HIGH SCHOOLS

Setting up a Green Committee

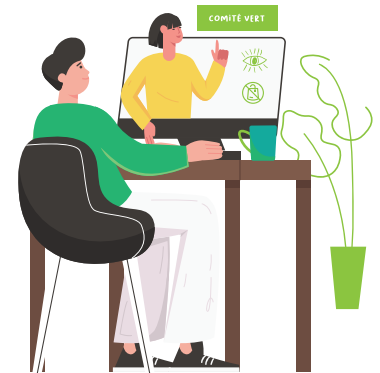


Setting up a Green Committee High Schools

Developed as part of



**Mission
Recyclage
Compostage**
Laurentides



The Mission Recyclage Compostage recycling and composting project is led by Synergie économique Laurentides in collaboration with the RCMs of the Laurentian administrative region and the City of Mirabel. The project aims to optimise the recycling and composting practices of the region's industries, companies and institutions (ICI) and to reduce what goes to landfill.



Synergie économique Laurentides is a non-profit organization whose mission is to offer its business, institutional and municipal clients in the Laurentians a development model based on the principles of the circular economy, so that they may be more competitive in managing residual materials and greenhouse gases. synergielaurentides.ca

THE SCHOOL KIT CONSISTS OF 4 DOCUMENTS:

- Introduction to good waste management
- **Setting up a Green Committee**
- Information, awareness and education tools
 - Printable learning tools.



This document is intended to serve as a reference for schools so that they can create and maintain a Green Committee in their school to improve waste management and reduce the amount of waste going to landfill.

Setting up a Green Committee

The Green Committee is committed to environmental issues in the community. It identifies projects aimed at improving good environmental practices in waste management.



The committee's objectives could be to:

- Raise awareness among staff, educational leaders and students about good environmental practice in waste management;
- Implement projects, for example, to optimise the sorting of residual materials in the school and to introduce a composting program;
- Train environmental ambassadors for the school through training, meetings, advice, newsletters and other concrete actions;
- Demonstrate to the student community that green actions matter.
- Change the behaviour of the school community as a whole so that all are aware of environmental issues.

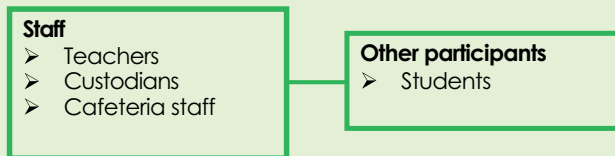
Structure

To structure a Green Committee, the ideal option is one that combines all the roles mentioned below. However, it is quite possible to set up a Green Committee with fewer members.

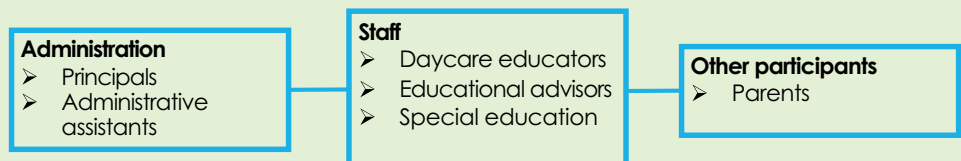


IDEAL STRUCTURE FOR THE CREATION OF A GREEN COMMITTEE

KEY PARTICIPANTS



RECOMMENDED PARTICIPANTS



Operation and meetings

For the operation and meetings of the Green Committee, here is a diagram that explains the detailed steps to help you get your Green Committee up and running right away.

STEPS TO SET UP A GREEN COMMITTEE



Green Committee Actions

To help you, here are some ideas for actions that can be assigned to students on the Green Committee:

- Occasional supervision of sorting in the cafeteria
- Collecting mini-bins (composting/recycling) in the classrooms
- Helping the janitorial staff
- Conducting workshops in the classrooms
- Organisation of various environmental activities
- Preparation of messages on the intercom concerning residual materials
- Design of awareness tools (e.g., posters)



Possible obstacles: lack of student involvement

From the first meeting, it is important to validate with the members what their interests and motivations are. This way, you will develop projects that align with their interests and their vision of the committee.

Committee members may lose interest if there isn't enough going on. Refer to the *School Kit's Information, Awareness and Education Activities and Tools* document for tons of ideas to keep members involved and motivated!

You have decided to set up composting in the classroom and in the cafeteria? Congratulations!

Here are some tips to avoid some typical composting problems:

Odours and insects:

- Place paper or cardboard at the bottom of the bin
- Avoid liquids!
- Place the brown bin in the shade (if possible)
- Put the bin out for pick-up even if it isn't full
- Rinse regularly and wash the bin with vinegar if necessary



There is a product that is used by restaurant kitchens. The product is called BIODOR and can be sprayed into the organic waste containers located in the kitchen, cafeteria or brown bins in the school. This product is compliant and compostable.

Winter and freezing

Winter can be harsh and organic material sometimes freezes in the bin, which can cause problems during pick-up. Here are some solutions:

- Put your organic materials in brown paper bags or wrap them in newspaper;
- Put cardboard or absorbent material (dry paper, newspaper, etc.) in the bin to alternate between wet and dry material;
- Avoid overloading or compacting the material in the bin;
- Avoid putting liquid or anything hot in the bin.

In summary

This section of the tool kit has enabled you to become experts in creating Green Committees! You know now why to create a green committee, who should be on it to ensure its effectiveness, what to do and how to avoid problems. In addition to having everything you need to ensure the sustainability of your committee, you now know how to manage your brown bin to avoid nuisances! **On your marks, get set, compost!**

